

受注推移表

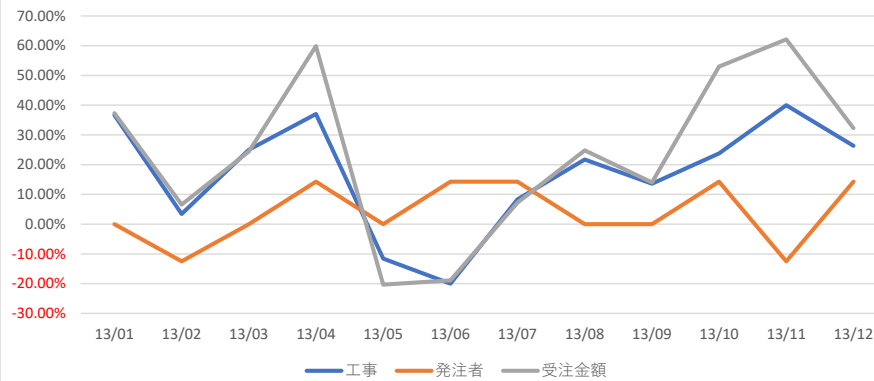
税抜

千円単位

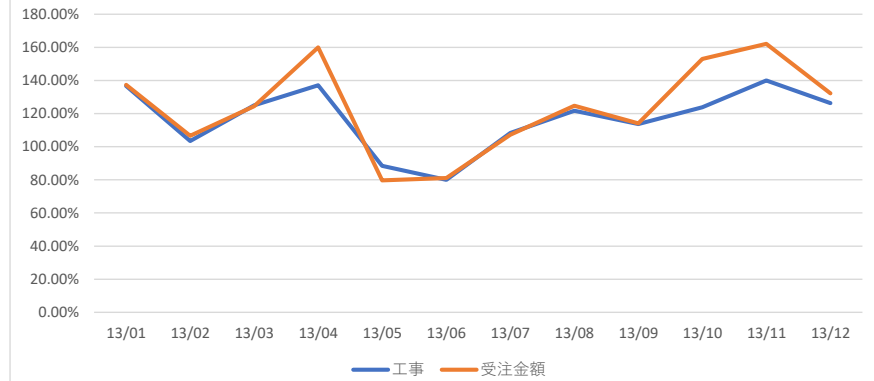
どっと建設株式会社
『期間:13/01~13/12』 『未成・完成:両方』

年月	13/01	13/02	13/03	13/04	13/05	13/06	13/07	13/08	13/09	13/10	13/11	13/12	
工事件数	当年	41	30	35	37	23	20	26	28	25	26	28	24
	前年	30	29	28	27	26	25	24	23	22	21	20	19
	前年比	136.67%	103.45%	125.00%	137.04%	88.46%	80.00%	108.33%	121.74%	113.64%	123.81%	140.00%	126.32%
	増加率	36.67%	3.45%	25.00%	37.04%	-11.54%	-20.00%	8.33%	21.74%	13.64%	23.81%	40.00%	26.32%
発注者件数	当年	8	7	8	8	8	8	8	8	8	8	7	8
	前年	8	8	8	7	8	7	7	8	8	7	8	7
	前年比	100.00%	87.50%	100.00%	114.29%	100.00%	114.29%	114.29%	100.00%	100.00%	114.29%	87.50%	114.29%
	増加率	0.00%	-12.50%	0.00%	14.29%	0.00%	14.29%	14.29%	0.00%	0.00%	14.29%	-12.50%	14.29%
受注金額	当年	41,200	32,450	38,320	49,650	24,860	25,340	33,451	38,742	35,125	46,586	48,635	38,954
	前年	30,000	30,450	30,800	31,050	31,200	31,250	31,200	31,050	30,800	30,450	30,000	29,450
	前年比	137.33%	106.57%	124.42%	159.90%	79.68%	81.09%	107.21%	124.77%	114.04%	152.99%	162.12%	132.27%
	増加率	37.33%	6.57%	24.42%	59.90%	-20.32%	-18.91%	7.21%	24.77%	14.04%	52.99%	62.12%	32.27%
平均単価	当年	1,005	1,082	1,095	1,342	1,081	1,267	1,287	1,384	1,405	1,792	1,737	1,623
	前年	1,000	1,050	1,100	1,150	1,200	1,250	1,300	1,350	1,400	1,450	1,500	1,550
	前年比	100.49%	103.02%	99.53%	116.69%	90.07%	101.36%	98.97%	102.49%	100.36%	123.57%	115.80%	104.72%
	増加率	0.49%	3.02%	-0.47%	16.69%	-9.93%	1.36%	-1.03%	2.49%	0.36%	23.57%	15.80%	4.72%

増加率



前年比



平均単価

